



NAK HAIR KERATIN SMOOTHING

ADVANCED SMOOTHING TECHNOLOGY
MANUAL



NAK HAIR
KERATIN
SMOOTHING

YOUR HAIR SHAPE AND TEXTURE
ARE UNIQUE TO YOU

DISCOVER A UNIQUE
SMOOTHING SERVICE DESIGNED TO

TAKE CONTROL OF UNRULY HAIR TEXTURE

-

REDUCE VOLUME, FRIZZ AND FLYAWAY

-

SOFTEN NATURAL HAIR SHAPE, TEXTURE AND CURL PATTERN

-

MINIMISE STYLING AND DRYING TIME

-

ENHANCE YOUR OVERALL STYLING EXPERIENCE



STRENGTHEN - SMOOTH - SOFTEN - REPAIR

INTRODUCING SAFE KERATIN ACTIVES
AND ADVANCED SMOOTHING TECHNOLOGY
THAT IS **FORMALDEHYDE FREE**

STRENGTHENING, SOFTENING, SMOOTHING
AND REPAIRING ALL HAIR TEXTURES.
CREATING SLEEK SMOOTHING RESULTS, EASILY
TAILORED TO SUIT INDIVIDUAL STYLING NEEDS.

THE SCIENCE OF NAK HAIR KERATIN SMOOTHING

NAK Hair Keratin Smoothing features safe Keratin actives that are **formaldehyde free**.

Offering smoothing performance, that won't stress hair fabric.
Creating gentle demi-permanent texture change **lasting up to 12 weeks**.

ADVANCED SMOOTHING ACTIVES

GLYCOLIC ACID AND CARBOCYSTEINE

Gently re-position the disulphide bonds, creating a subtle relaxation of natural hair shape texture and curl pattern.

NANO KERATIN PARTICLES

Carry the smoothing actives, into the deepest part of the cortex.
Filling up the spaces between the re-positioned disulphide bonds.

SMOOTHING EMOLLIENTS

Are temporarily sealed and pressed inside the hair layers
resulting in a smooth and sleek frizz free texture change.

THINGS TO CONSIDER PRIOR TO SMOOTHING

- A strand test is an essential step when hair tolerance is unknown
- Consider hair texture, strength, porosity, elasticity and condition
- Consider chemical history and accumulation of breakage or damage
 - Re-establish strength in damaged hair with a keratin light service
 - Reduce the temperature and passes when ironing fragile hair
 - Use extra care when smoothing & ironing pre-lightened blonde hair
- Please follow guidelines & recommendations for smoothing longevity
 - Please refer to our NAK smoothing instructional video
- For technical support - please call the NAK hotline 07 3895 4566

PERFECTING SMOOTHING RESULTS

- Ensure the hair is thoroughly clean - prior to smoothing
- Take fine half centimetre sections - beginning from the nape to the crown
 - Apply smoothing sealant thoroughly - **do not over saturate the hair**
 - Do not apply sealant to the scalp or root area - keep 1cm away
 - Upon completing smoothing application - re-apply sealant to dry areas
 - Add heat to the hair - rollerball or dryer - **do not use a steamer**
- If required, extend processing time - on coarse hair textures - up to 15 min
- If required, extend processing time - on afro caribbean tight curl up to 30 min
 - When extending processing time - more product may be required
 - Stretch hair during blow-drying - using a ceramic round brush
 - Hair should be touch dry - **do not over dry**
 - Iron each section carefully - using correct temperature and passes
 - Begin ironing at the root area - with super quick light passes
 - Finish ironing from roots to ends - smoothing each section straight



SMOOTHING MENU

EXPRESS - VOLUME - INTENSIVE



SELECT A VERSATILE SMOOTHING OPTION
EASILY TAILORED TO MEET YOUR STYLING NEEDS

-



NAK KERATIN LIGHT
EXPRESS SMOOTHING SERVICE

Experience a temporary taste of keratin smoothing.
Gently relax natural hair shape and texture.
Infuse strength shine, softness and repair.
Minimise drying and styling time, improve everyday styling and manageability.

SERVICE TIME 1 hour
SUITABLE FOR all hair textures
LONGEVITY up to 4 weeks

FROM \$100

-



NAK KERATIN ANTI-FRIZZ
VOLUME REDUCTION SERVICE

Step up to a moderate keratin smoothing result.
Focus on minimising volume to reduce frizz and flyaway.
Smooth unruly curl shape, create sleek styling control.
Minimise drying and styling time to a minimum, improve everyday styling and manageability.

SERVICE TIME 2-2.5 hours
SUITABLE FOR medium to fine textures
LONGEVITY up to 8 weeks

FROM \$175

-

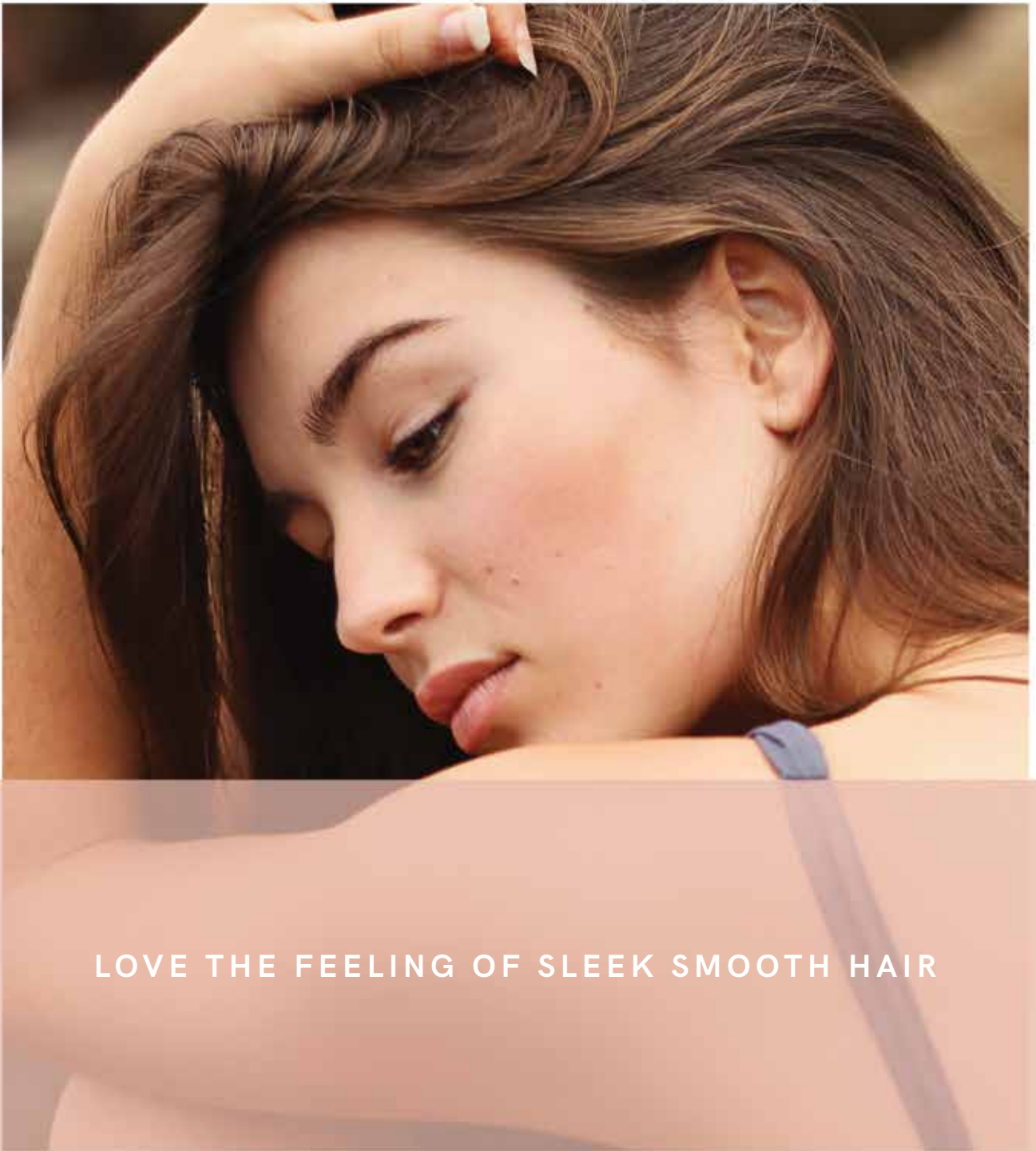


NAK KERATIN PLUS
INTENSIVE SMOOTHING SERVICE

Experience a maximum keratin smoothing result.
Take charge of naturally strong, thick, coarse or hard to manage hair texture.
Love the feeling of a sleeker, straighter, smoother hair.
Minimise drying and styling time to a minimum, improve everyday styling and manageability.

SERVICE TIME 3-3.5 hours
SUITABLE FOR thick, coarse, strong textures
LONGEVITY up to 12 weeks

FROM \$250



LOVE THE FEELING OF SLEEK SMOOTH HAIR

SMOOTHING TREATMENT GUIDELINES

NAK KERATIN LIGHT

EXPRESS SMOOTHING SERVICE

Provides temporary smoothing results - lasting up to 4 weeks

–

STEP 1

CLEANSE WITH NAK HAIR KERATIN SMOOTHING SHAMPOO

- Shampoo hair **2-3 times** to remove possible residue.
- Leave final shampoo, penetrate for **5 min.**
- Massage mid-lengths and ends to remove residue.
- Rinse thoroughly to remove all traces of shampoo.

STEP 2

DRYING

- Dry hair to 100% dry.
- Clip hair into 4 sections.

STEP 3

APPLY NAK HAIR KERATIN SMOOTHING SEALANT

- Begin at the nape area, working your way up to the crown.
- Take 1cm sections throughout your application.
- Keep product away from the roots and scalp area.
- Apply small amounts of product to each section.
- **Do not over saturate the hair.**
- Spread product through to mid-lengths and ends.
- **Comb each section to ensure an even distribution.**

STEP 4

TIMING & REMOVAL

- Cover hair with a plastic cap.
- Process under a medium heat source for **30 min.**
- Allow hair to cool for **5-10 min.**
- Rinse thoroughly with cool or tepid water - for **5 min.**
- **Do not shampoo product out.**

STEP 5

APPLY NAK HAIR KERATIN SMOOTHING MASQUE

- Saturate hair with Smoothing Masque from roots to end.
- Leave on for **5-15 min**, massage scalp for client comfort.
- Rinse thoroughly with cool or tepid water.
- **Do not shampoo product out.**

STEP 6

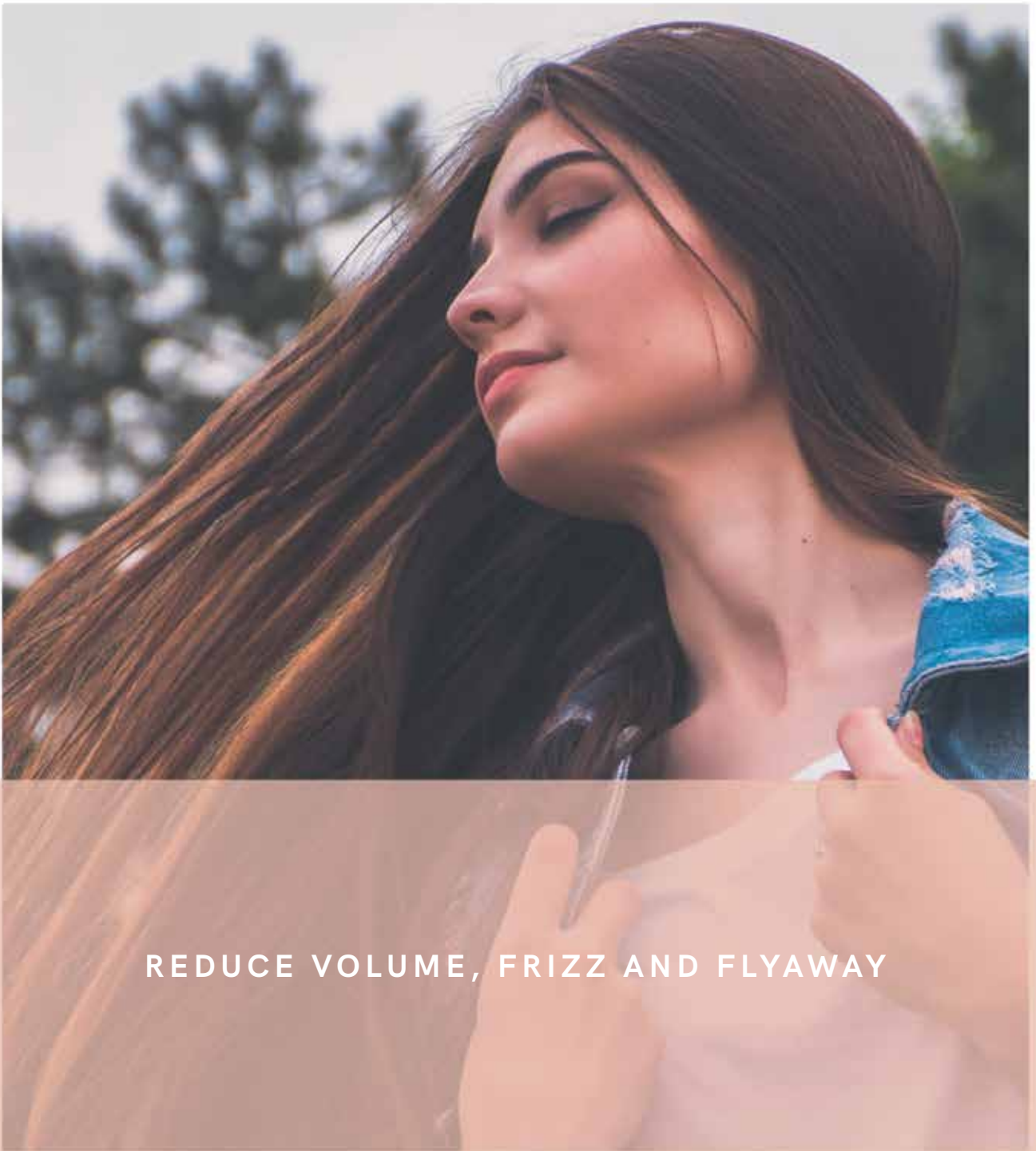
FINISHING

- Complete with NAK Repl.ends leave-in moisturiser.
- Style hair as desired.

–

AFTERCARE AND MAINTENANCE

For optimum care and longevity of your newly formed smoothing service. Please follow the recommended aftercare guidelines using the protective home care and maintenance products.



REDUCE VOLUME, FRIZZ AND FLYAWAY

SMOOTHING TREATMENT GUIDELINES

NAK KERATIN ANTI-FRIZZ VOLUME REDUCTION SERVICE

Provides semi-permanent smoothing results - lasting up to 8 weeks

–

STEP 1

CLEANSE WITH NAK HAIR KERATIN SMOOTHING SHAMPOO

- Shampoo hair **2-3 times** to remove possible residue.
- Leave final shampoo, penetrate for **5 min.**
- Massage mid-lengths and ends to remove residue.
- Rinse thoroughly to remove all traces of shampoo.

STEP 2

DRYING

- Dry hair to 100% dry.
- Clip hair into 4 sections.

STEP 3

APPLY NAK HAIR KERATIN SMOOTHING SEALANT

- Begin at the nape area, working your way up to the crown.
- Take 1cm sections throughout your application.
- Keep product away from the roots and scalp area.
- Apply small amounts of product to each section.
- **Do not over saturate the hair.**
- Spread product through to mid-lengths and ends.
- **Comb each section to ensure an even distribution.**

STEP 4

TIMING

- Cover hair with a plastic cap.
- Process under a medium heat source for **15 to 20 min.**

STEP 5

RINSING

- Using cool water only, rinse out for **15-20** seconds.
- Rinse up to **70-80%** of the product from the hair.
- **Do not rinse out the entire amount of product from the hair.**

STEP 6

BLOW-DRYING

- Towel blot hair and section into 4 parts.
- Begin at the nape area, working your way up to the crown.
- Blow-dry small sections, with a round bristle brush.
- Use tension to stretch the hair at the root area only.
- **Do not over stretch the mid-lengths and ends.**

After drying there will be a slight residue of product left in the hair. Hair should be touch dry - do not over dry sections.

STEP 7

IRONING TECHNIQUE

Ironing technique should be quick, smooth and light.

- Take **1cm** sections throughout, commencing at the nape area.
- Begin ironing with **1-2** super quick light passes at the root area only.
- Follow this with **2-4** quick smooth light passes ironing sections from roots to ends.
- **Reduce temperature and passes when ironing pre-lightened, fragile or sensitised hair.**

STEP 8

FINISHING

- **Do not rinse smoothing product out.**
- Style hair as desired.

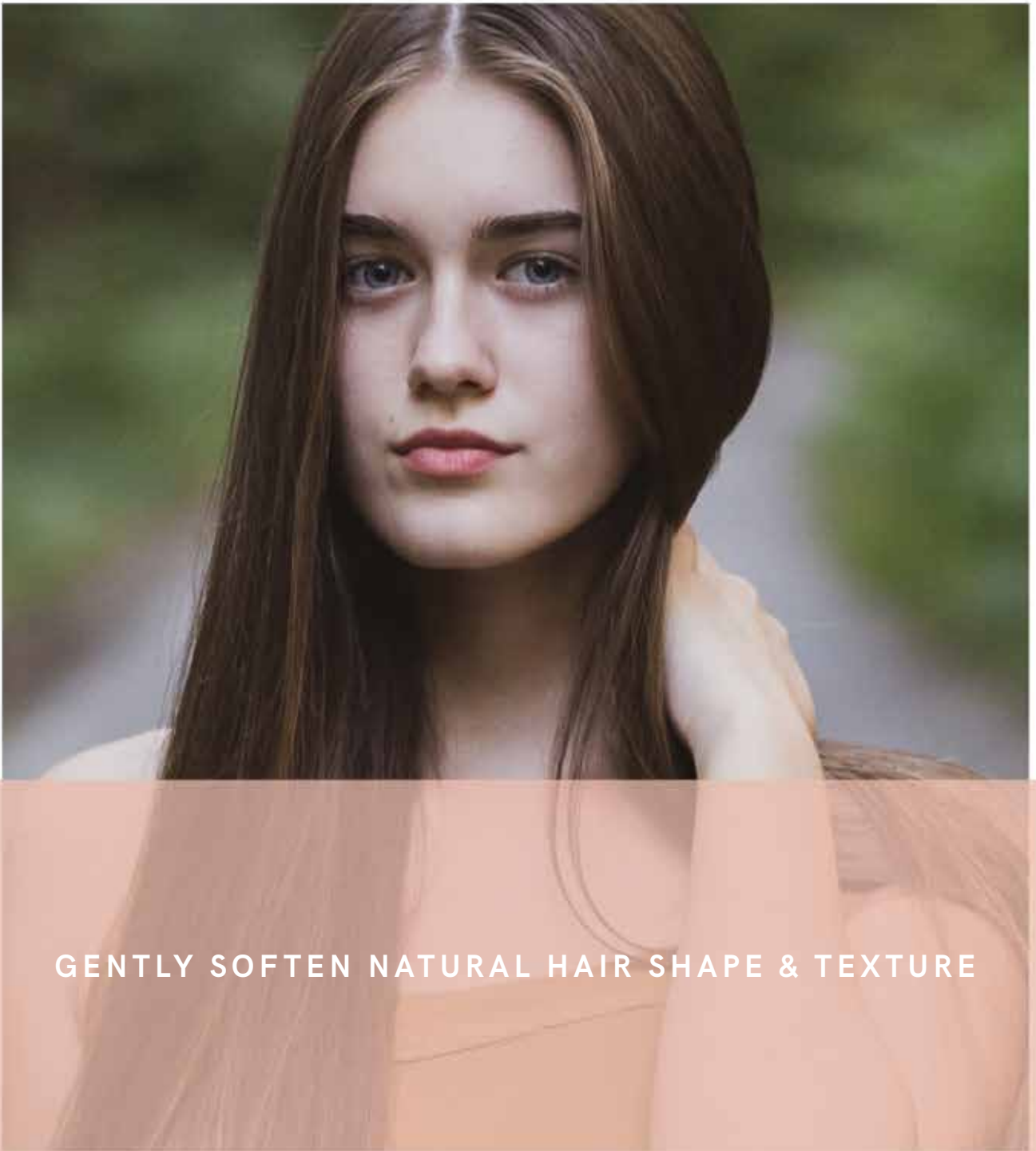
–

AFTERCARE AND MAINTENANCE

For optimum care and longevity of your newly formed smoothing service. Please follow the recommended aftercare guidelines using the protective home care and maintenance products.

IRONING GUIDELINES

HAIR TYPE	PASSES	TEMPERATURE
Sensitised Hair	2-4 Passes	180 Degrees
Coloured Hair	3-4 Passes	200 Degrees
Natural Hair	3-4 Passes	220 Degrees



GENTLY SOFTEN NATURAL HAIR SHAPE & TEXTURE

SMOOTHING TREATMENT GUIDELINES

NAK KERATIN PLUS

INTENSIVE SMOOTHING SERVICE

Provides demi-permanent smoothing result - lasting up to 12 weeks

–

STEP 1

CLEANSE WITH NAK HAIR KERATIN SMOOTHING SHAMPOO

- Shampoo hair **2-3 times** to remove possible residue.
- Leave final shampoo, penetrate for **5 min.**
- Massage mid-lengths and ends to remove residue.
- Rinse thoroughly to remove all traces of shampoo.

STEP 2

DRYING

- Dry hair to 100% dry.
- Clip hair into 4 sections.

STEP 3

APPLY NAK HAIR KERATIN SMOOTHING SEALANT

- Begin at the nape area, working your way up to the crown.
- Take 1cm sections throughout your application.
- Keep product away from the roots and scalp area.
- Apply small amounts of product to each section.
- **Do not over saturate the hair.**
- Spread product through to mid-lengths and ends.
- **Comb each section to ensure an even distribution.**

STEP 4

TIMING

- Cover hair with a plastic cap.
- Process under a medium heat source for **30 min.**
- **Do not rinse out smoothing product from the hair.**

STEP 5

BLOW-DRYING

- Begin at nape area, working your way up to the crown.
- Blow-dry small sections, with a round bristle brush.
- Use tension to stretch the hair at the root area only.
- **Do not over stretch the mid-lengths and ends.**

After drying there will be a slight residue of product left in the hair. Hair should be touch dry - do not over dry sections.

STEP 6

IRONING GUIDELINES

Ironing technique should be quick, smooth and light.

- Take **1cm** sections throughout, commencing at the nape area
- Begin ironing with **3-4** quick light passes at the root area only.
- Follow this with **5-7** quick smooth light passes ironing sections from roots to ends.
Reduce temperature and passes when ironing pre-lightened, fragile or sensitised hair.

STEP 7

RINSING

- Rinse after completing ironing steps.
- Using cool or tepid water rinse out **100%** of product.
- **Do not shampoo product out.**

STEP 8

APPLY NAK HAIR KERATIN SMOOTHING MASQUE

- Saturate hair with smoothing masque from roots to ends.
- Leave on for **15 min**, massage scalp for client comfort.
- Rinse thoroughly with cool or tepid water.

STEP 8

FINISHING

- Style hair as desired.

–

PLEASE NOTE

When working with strong hair textures, e.g. Afro Caribbean hair, extra smoothing sealant may be required and timing can be extended by 10-15mins.

–

AFTERCARE AND MAINTENANCE

For optimum care and longevity of your newly formed smoothing service. Please follow the recommended aftercare guidelines using the protective home care and maintenance products.

IRONING GUIDELINES

HAIR TYPE	PASSES	TEMPERATURE
Sensitised Hair	3-4 Passes	180 Degrees
Coloured Hair	5-7 Passes	200 Degrees
Natural Hair	5-7 Passes	230 Degrees

FAQ'S

HOW WILL MY HAIR FEEL?

Hair feels stronger, softer, sleeker and smoother.

HOW LONG WILL MY SMOOTHING SERVICE LAST?

Smoothing results are designed to last up to 12 weeks.

Dependant on the service selected, and lifestyle factors. Longevity is enhanced when following aftercare guidelines and using the recommended homecare.

WILL MY HAIR STILL HAVE BOUNCE & BODY?

Hair still has natural bounce and movement, as hair texture is not permanently straight. Natural hair shape and texture are gently relaxed, the natural shape and original texture will gradually return overtime.

WILL MY HAIR COLOUR CHANGE?

Colour change is inevitable, depending on the existing colour. Colour compromise is temporary and your shade can be replenished with a non-oxidising colour product immediately after your smoothing service. E.G. NAK Blonde Collection, NAK Colour Masque.

HOW SOON AFTER MAY I COLOUR MY HAIR?

For optimum smoothing longevity, **please wait one week** before performing an oxidising colour or lightening service. E.G. NAK Permanent or NAK Soft - colour with integrity.

HOW OFTEN CAN I EXPERIENCE A KERATIN SMOOTHING SERVICE?

NAK Hair Keratin Smoothing services may be performed every 12 weeks.

CAN SMOOTHING BE PERFORMED DURING PREGNANCY?

NAK Hair Keratin Smoothing features safe keratin actives and ingredients. Our recommendation is to discuss all matters regarding your health and wellbeing, with your medical practitioner.

AFTERCARE GUIDELINES

CARING FOR YOUR HAIR

Please follow the recommended aftercare guidelines.

To ensure optimum smoothing longevity, please take extra care of your hair during the first week.

CLEANSING & CONDITIONING

Please wait 48hrs before cleansing and conditioning your hair. We recommend maintaining your smoothing service with NAK Aromas Smooth Shampoo, Conditioner and Straightening Creme, Aromas Oil Spray and Aromas Hydra Therapy Masque or your preferred NAK products.

WETTING THE HAIR

Please wait 48hrs before wetting the hair.

If your hair accidentally gets wet, please blow-dry your hairstyle completing with gentle ironing, to re-establish a smooth straight finish which reseals keratin actives on the hair surface.

SWIMMING

Please wait 48hours before swimming or exposing your hair to chlorine and salt water. Pool chemicals and ocean water breakdown smoothing results quickly, greatly affecting longevity, causing moisture loss and dryness. Consider using NAK Aromas Oil Spray, Aromas Ends Therapy and Aromas Hydra Therapy Masque to infuse and replace essential hydration.

EXERCISE

Please wait 48hrs before returning to your normal exercise routine as sweat and water may disturb newly formed smoothing results.

STYLING

Please wait 48hrs before pinning or tying the hair back.

Extra care is required, as newly formed hair shape is still processing. Pinning may create tension and leave unwanted indentations or marks.



SAFE KERATIN ACTIVES
AND ADVANCED SMOOTHING TECHNOLOGY
THAT IS FORMALDEHYDE FREE

A VERSATILE 3 IN 1 SMOOTHING SYSTEM

NAK HAIR
KERATIN
SMOOTHING